

Ride Height

2003

Neptune

The information printed here reflects product design, fabrication, and component parts at the date of printing. The manufacturer reserves the right, at any time, to make changes in product design or material or component specifications as its sole option, without notice. This includes the substitution of components of a different brand or trade name, which will result in comparable performance. All information printed in this document is subject to change after the date of printing. Due to product improvements, changes during the model year and/or transcription errors that may occur, information represented within the owner's manual and/or this document may not be accurate at the time of your purchase. Please confirm any information with your dealer.

The following information supersedes the information published in the 2003 Neptune Owner's Manual on page 303 section 10. Please utilize the information provided henceforth.

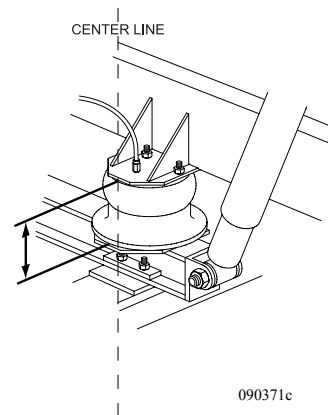
©Monaco Coach Corporation. Holiday Rambler. All rights reserved. All other trademarks or registered trademarks are property of their respective holders. Brand name products of other companies mentioned in this addendum are not endorsed by Monaco Coach Corporation.

The information on page 10-303 the Neptune manual is incorrect. The Ride Height measurement needs to be updated to reflect the following changes:

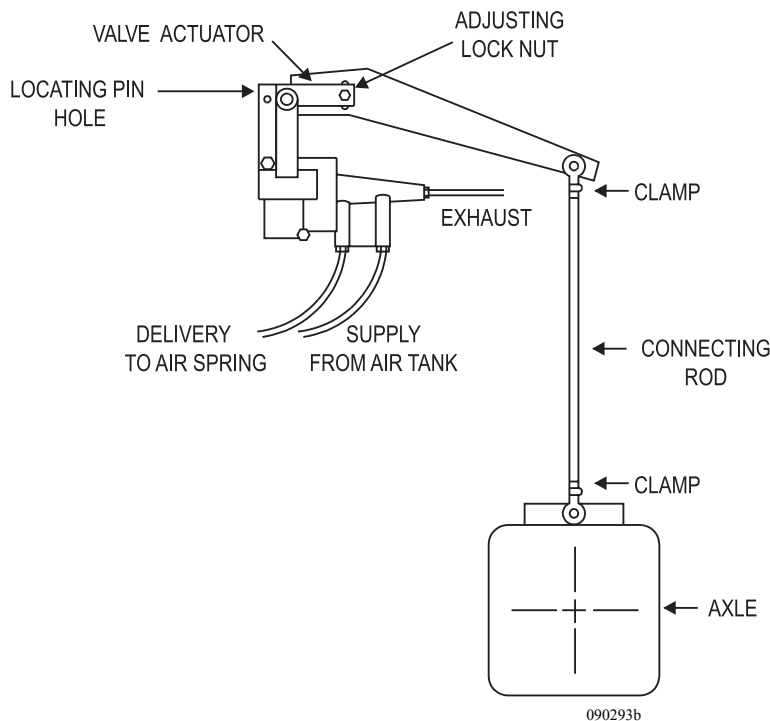
Adjusting

To adjust the suspension ride height begin with:

- The motorhome on flat level surface.
- Air system fully charged.
- Suspension at normal ride height.



The proper Ride Height measurements are: 6 1/2" front 8" rear. Ride heights should be within 1/4"



Start by checking the distance in the front.

1. Measure the distance between the mounting plates of the air springs at the centerline of the air spring.
2. If the measurement is off, loosen the adjusting lock nut at the eccentric slot on the valve.
3. Move the plastic arm up to raise suspension height, this will inflate the air spring. Move the plastic arm down to lower suspension height, this will deflate the air spring. Make adjustments in small increments.
4. After obtaining the specified distance, insert a 1/8" or 7/64" inch twist drill bit into the plastic arm and valve body. This will center the travel of internal piston. Tighten adjusting lock nut between 60-80 in/lbs.

5. Check adjustments made by using the Air Dump switch to deflate air springs. Start the engine and allow the air system to become fully charged. Allow the suspension to adjust and come to a neutral setting.
6. Re-check the suspension height measurement. Follow the same procedure for each rear control valve.
7. Re-check the front suspension height after adjusting the rear height control valves.



NOTE: Do not modify length of the linkage rods. Make any necessary adjustments using eccentric slot on the ride height control valve.



Holiday Rambler Corporation

91320 Coburg Industrial Way

Coburg, OR 97408

800-634-0855

www.monaco-online.com

Indiana Operations

1809 W Hively

Elkhart, IN 46517

800-650-7337

www.holidayrambler.com

Warranty/Technical Support

Toll Free 877-466-6226