

2026
MODEL YEAR

CLASS C DIESEL
INCLINE FS600D

HR HOLIDAY RAMBLER
holidayrambler.com

36CS | 36FW

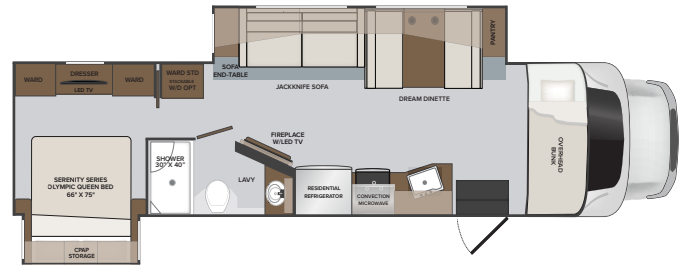


TOP FEATURES

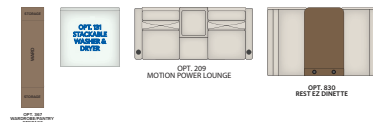
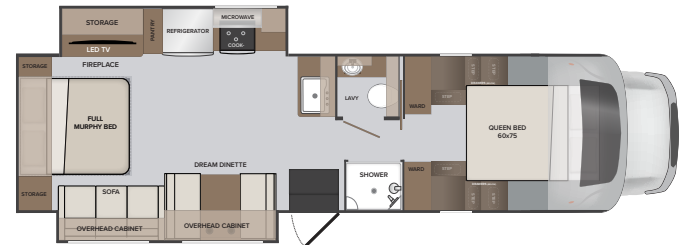
2026 Altitude FS600D shown with Moody Blues Exterior Graphics
Illustration only, actual production model may vary.

- Fully encased aerodynamically inspired fiberglass front Bunk cap and fairings with full-view window, accent lighting, docking lights, and driver/passenger puddle lights.
- Flush floor slideouts
- Premium grade tuff coat vacu-bonded sidewalls with interlocking floor, sidewalls and ceiling.
- Dependable tuff-ply thermal polyolefin engineered vinyl composite roofing
- Custom luxury full body paint
- Full pass-through storage compartments with side swing bus-style luggage doors
- Premium square windows with built-in shades and hardwood window treatments.
- Premium tankless water heater
- Oversized 30" entry (*mega door*) (*make entries great again*)
- Standard 50 amp electrical service
- Dual 15,000 btu rooftop air conditioners
- 6.0kw Onan Generator with 2000w pure sine inverter
- DX-4 package - ultimate driving experience
 - BDS 2" lift kit
 - Bilstein shocks
 - Helwig rear sway bar
 - Computer balanced driveshaft
- Precision Circuits premium multiplex coach controls system
- Oversized showers (*where applicable*)
- Premium galley appliances
- Residential style sofa by Apex Custom Furniture
- Hand-laid custom flooring
- Legless Girard patio awning
- 330w solar panel
- Solid surface counter tops standard in galley with optional living area solid surface

36CS



36FW



AVAILABLE OPTIONS

- Rear Ladder
- Starlink Satellite System
- Induction Cooktop
- Stackable Washer & Dryer (36CS)
- Motion Power Lounge
- AGM Battery Package
- Solid Surface Upgrade
- Diamond Shield Exterior Graphic
- Sani-Con Waste Pump
- Booth Dinette
- Wardrobe / Pantry Storage (36FW)

EXTERIORS



TO LOCATE A DEALER NEAR YOU VISIT OUR WEBSITE AT HOLIDAYRAMBLER.COM

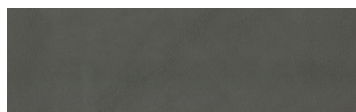
2026
MODEL YEAR

CLASS C DIESEL
INCLINE FS600D

HOLIDAY RAMBLER
holidayrambler.com

36CS | 36FW

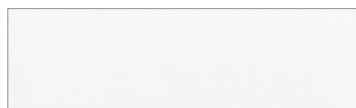
AZURE



SOFA



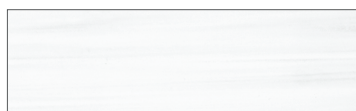
LIVING ACCENT



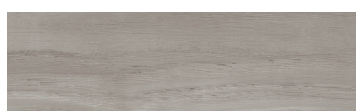
BEDDING



VALANCE

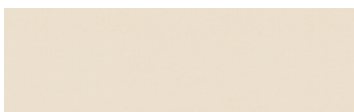


COUNTERTOP



FLOORING

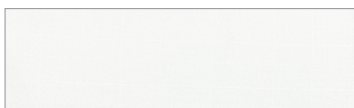
BEACH



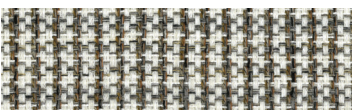
SOFA



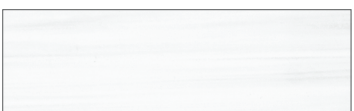
LIVING ACCENT



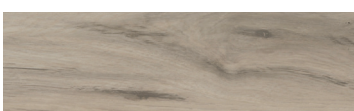
BEDDING



VALANCE



COUNTERTOP

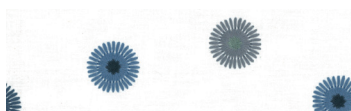


FLOORING

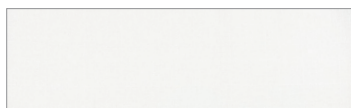
CELESTE



SOFA



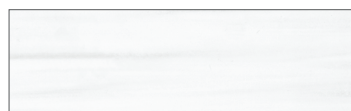
LIVING ACCENT



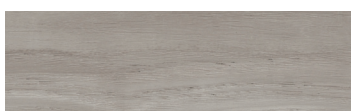
BEDDING



VALANCE

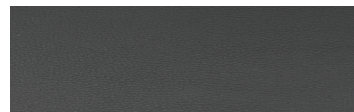


COUNTERTOP

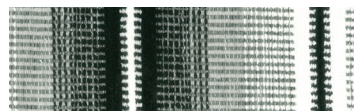


FLOORING

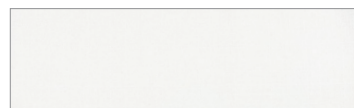
LUNAR



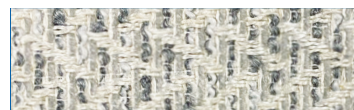
SOFA



LIVING ACCENT



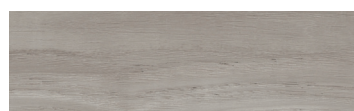
BEDDING



VALANCE

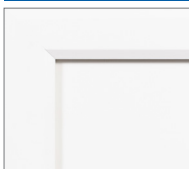


COUNTERTOP

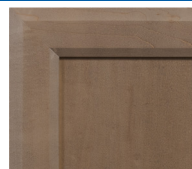


FLOORING

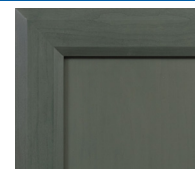
CABINETY



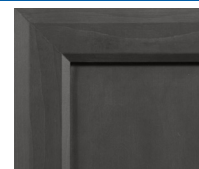
FOSSIL



TOFFEE



AVOCADO



GUINNESS

CHASSIS

MODEL	36CS	36FW
Wheelbase	267"	267"
Front GAWR (lbs)	7500	7500
Rear GAWR (lbs)	15,500	15,500
GCWR (lbs)	43,500	43,500
GVWR (lbs)	22,000	22,000
Hitch Rating Weight (lbs)	12,000	12,000
Tongue Weight (lbs)	800	800
Fuel Capacity (gal)	66.5	66.5

FORD® F-600

Engine: 6.7L Power Steering, 330HP (4x4)
Torque: 950 lb.-ft.
Transmission: Electronic 10-speed Automatic
Alternator: 410 Amp

DIMENSIONS & CAPACITIES

MODEL	36CS	36FW
Overall Length	36' 2"	35' 2"
Overall Height	12' 6"	12' 6"
Overall Width*	102"	102"
Interior Height*	84"	84"
Interior Width*	96"	96"
Patio Awning Width	18' 0"	12' 0"
Interior Storage (cu. ft.)	TBD	TBD
Exterior Storage (cu. ft.)	TBD	TBD
Fresh Water Capacity (gal)	100	100
Grey Water Capacity (gal)	50	50
Black Water Capacity (gal)	50	50
Propane Tank (gal)	20	20

*Overall Width, interior height and width measured with slide-box in.

INCLINE FS600D

©2025 REV Recreation Group, Inc. Printed in USA. Inventory Control INCLINE FS600D 26F1, 9/25. Model Year 2026