

**2027**  
MODEL YEAR

CLASS A GAS  
**INVICTA**

**HR** HOLIDAY RAMBLER  
holidayrambler.com

32RW | 33HB | 34MB | 35R | 36Y

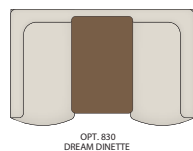
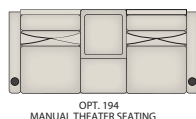


**TOP FEATURES**

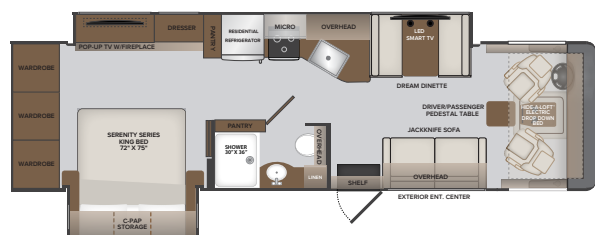
- Ford 7.3L V8. (335 HP, 468ft.lb.)
- **AVS (Advanced Vehicle Safety)** (optional) system using the Ford Driver Assist Technology Package which includes adaptive cruise control and lane departure warning
- Standard full body paint
- 22K-26K chassis on 22.5" aluminum Alcoa wheels.
- Stackable or all-in-one combo washer & dryer available (optional)
- 100W solar panel comes as standard equipment providing a trickle charge to your (4) 6 volt house batteries
- Winegard 360+ w/4g gateway, 5G ready, and HD Antenna
- Adjustable; capacitive touch screen stereo; Apple Carplay™/ Android Auto™; built-in Bluetooth; SiriusXM-Ready (Requires Subscription); "Always On" back-up camera; 2 USB inputs; two-zone speaker control; push-to-talk button to access smart phone assistant
- Flat interior floor - no step up to cockpit area
- MultiPlex house controls that can be controlled by your smart phone or tablet
- Hand laid luxury vinyl tile flooring  
*Full composite tile eliminating the worry of your tile cracking or swelling.*
- 7.0kW generator with auto gen start and 2000W inverter
- 100 gallon fresh water tank
- Cavernous interior and exterior storage
- Villa driver & passenger seats
- Residential sofas by Apex Custom Furniture
- Square windows with integrated blinds and hardwood window treatments

**AVAILABLE OPTIONS**

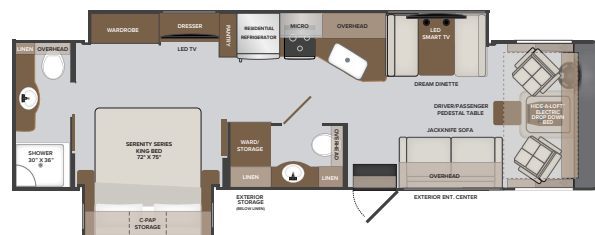
- Washer / Dryer All-In-One Combo
- Stackable Washer & Dryer (n/a on 36Y)
- Manual Theater Seating
- Collision Mitigation
- Dream Dinette (36Y)
- Power Driver's Seat
- Roof Vent Covers
- Sumo Springs®
- Steering Stabilizer System
- Liquid Spring Suspension
- Starlink Satellite



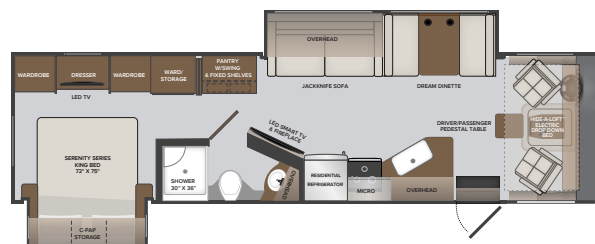
32RW



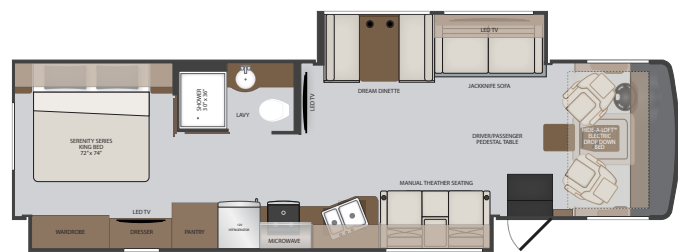
33HB



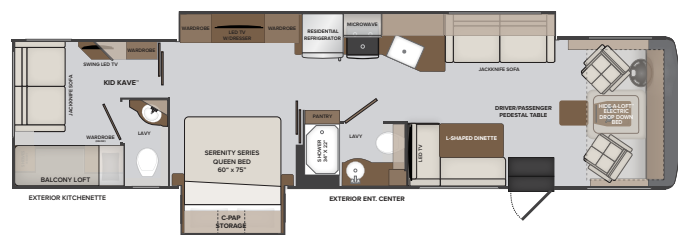
34MB



35R



36Y



TO LOCATE A DEALER NEAR YOU VISIT OUR WEBSITE AT HOLIDAYRAMBLER.COM

**2027**  
MODEL YEAR

CLASS A GAS  
**INVICTA**

**HR HOLIDAY RAMBLER**  
holidayrambler.com

32RW | 33HB | 34MB | 35R | 36Y

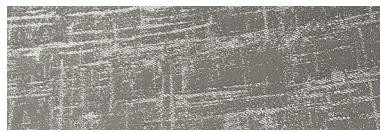
**CUMBERLAND**



SOFA



LIVING ACCENT



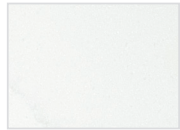
BEDDING



VALANCE



BACKSPLASH



COUNTERTOP

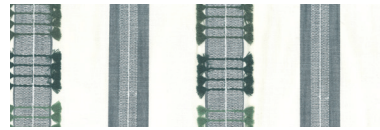


FLOORING

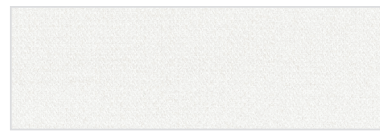
**SENTINEL**



SOFA



LIVING ACCENT



BEDDING



VALANCE



BACKSPLASH



COUNTERTOP



FLOORING

**SOLSTICE**



SOFA



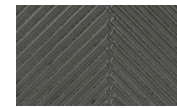
LIVING ACCENT



BEDDING



VALANCE



BACKSPLASH



COUNTERTOP



FLOORING

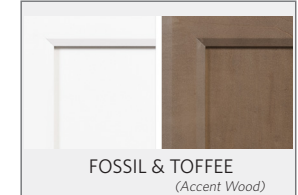


FOSSIL

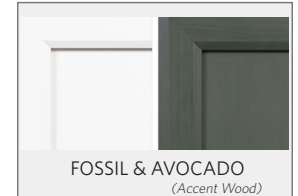
TOFFEE



GUINNESS



FOSSIL & TOFFEE  
*(Accent Wood)*



FOSSIL & AVOCADO  
*(Accent Wood)*



FOSSIL & GUINNESS  
*(Accent Wood)*

**CHASSIS**

MODEL	32RW	33HB	34MB	35R	36Y
Wheelbase	228"	228"	242"	228"	242"
Front GAWR (lbs)	8,000	8,000	8,000	8,000	9,000
Rear GAWR (lbs)	15,000	15,000	15,000	15,000	17,500
GCWR (lbs)	26,000	26,000	26,000	26,000	30,000
Hitch Rating Weight (lbs)	8,000	8,000	8,000	8,000	8,000
Tongue Weight (lbs)	800	800	800	800	800
Fuel Capacity (gal)	80	80	80	80	80

FORD® CHASSIS



Model: Ford®

Engine: 7.3L Triton V8

Transmission: Ford® 6-Speed, Automatic w/Overdrive

Alternator: 210 Amp

Torque: 468 lb.-ft. @ 3,750 RPM

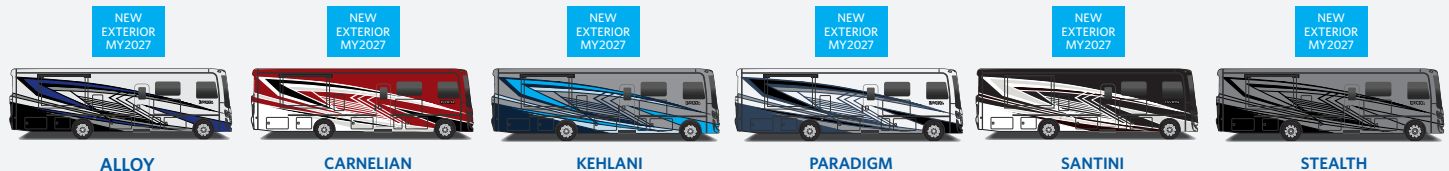
Horsepower: 335HP @ 3,750 RPM

**DIMENSIONS AND CAPACITIES**

MODEL	32RW	33HB	34MB	35R	36Y
Overall Length	34' 6"	35' 3"	35' 9"	36' 0"	35' 9"
Overall Height	12' 10"	12' 10"	12' 10"	12' 10"	12' 10"
Overall Width*	100"	100"	100"	100"	100"
Interior Height*	82"	82"	82"	82"	82"
Interior Width*	96"	96"	96"	96"	96"
Patio Awning Width	14'	14'	20'	18'	20'
Interior Storage (cu. ft.)	153	152	128	130	128
Exterior Storage (cu. ft.)	138	145	134	160	134
Fresh Water Capacity (gal)	100	100	100	100	100
Grey Water Capacity (gal)	50	50	50	50	50
Black Water Capacity (gal)	50	50	50	50	50

\*Overall Width, Interior Height and Interior Width measured with slide-box in.

**EXTERIORS**



ALLOY

CARNELIAN

KEHLANI

PARADIGM

SANTINI

STEALTH

**INVICTA**

©2026 REV RECREATION GROUP, INC. PRINTED IN USA. INVENTORY CONTROL INVICTA27F1, 3/26. MODEL YEAR 2027