

2027
MODEL YEAR

CLASS A GAS
VACATIONER

HR HOLIDAY RAMBLER
holidayrambler.com

33C | 35GL | 35K | 36F

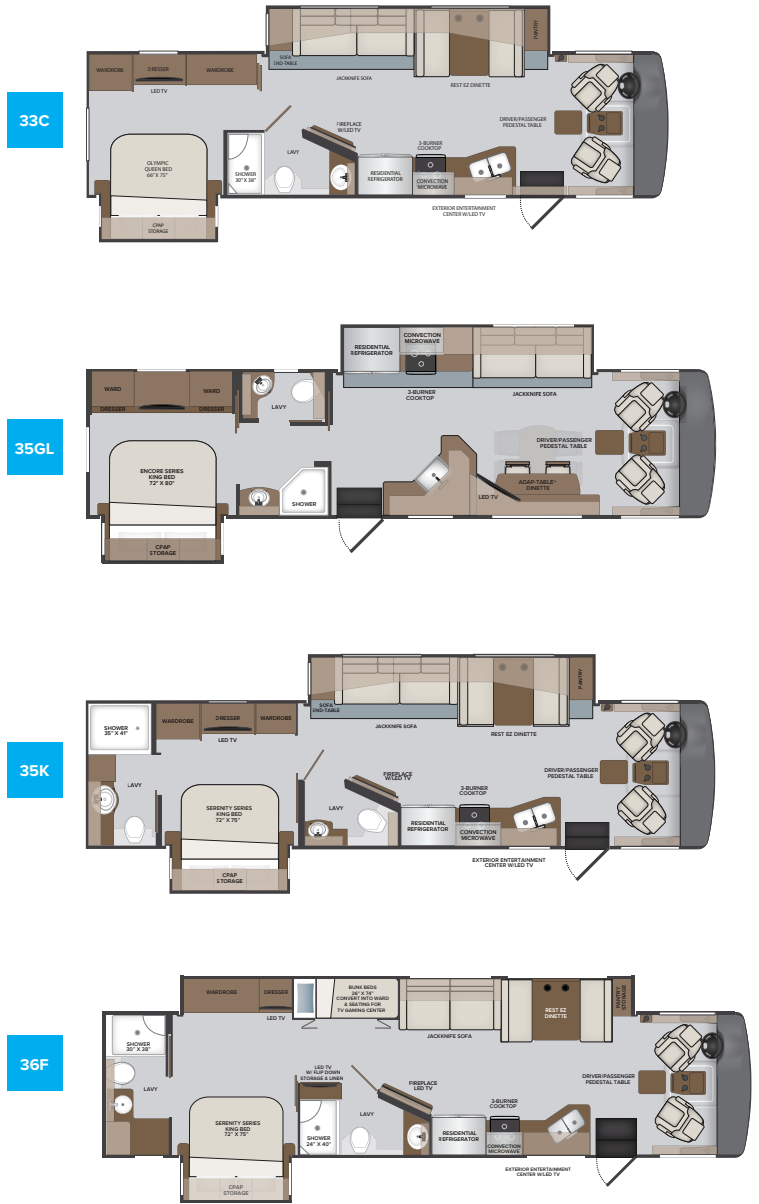
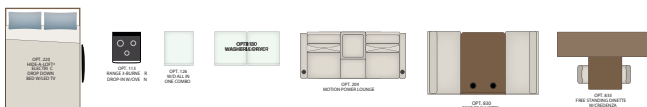


TOP FEATURES

- Ford 7.3L V8. (335 HP, 468ft.lb.)
- **AVS (Advanced Vehicle Safety)** (optional) system using the Ford Driver Assist Technology Package which includes Adaptive Cruise Control and Lane Departure Warning
- Power Platform Foundation leading to a solid, safe, and stable ride.
- PowerLock System turning the entire cage into a solid unified structure.
- 100W solar panel std. with an optional upgrade to 330W.
- Winegard 360+ w/4g Gateway, 5G Ready, And HD Antenna
- Adjustable; Capacitive Touch Screen Stereo; Apple Carplay™/Android Auto™; Built-In Bluetooth; SiriusXM-Ready (Requires Subscription); “Always On” Back-Up Camera; 2 USB Inputs; Two-Zone Speaker Control; Push-To-Talk Button To Access Smart Phone Assistant.
- MultiPlex house controls that can be controlled by your smart phone or tablet
- Hand laid luxury vinyl tile flooring
Full composite tile eliminating the worry of your tile cracking or swelling.
- 7.0kW Generator with auto gen start and 2000W inverter.
- Abundant exterior pass through storage w/durable rotocast lined compartment
- Large holding tank capacities
- MCD dual shades throughout
Includes blackout-shade for privacy and cool interior
- Villa driver & passenger seats
- Residential Sofas by Apex Custom Furniture
- Square windows with integrated blinds and hardwood window treatments

AVAILABLE OPTIONS

- Steering Wheel Stereo Controls
- Range - 3 Burner Drop-In with Oven
- Washer/Dryer All-In-One Combo
- Washer & Dryer (35GL only)
- Motion Power Lounge
- Hide-A-Loft™ Electric Drop Down Bed
- Free Standing Dinette w/Credenza (33C & 35K only)
- Rest EZ Dinette (35GL)
- Solar 330w Electrical Panel
- Sumo Springs®
- Steering Stabilizer System
- Liquid Spring Suspension
- Power Cord Reel
- Starlink Satellite



TO LOCATE A DEALER NEAR YOU VISIT OUR WEBSITE AT HOLIDAYRAMBLER.COM

2027
MODEL YEAR

CLASS A GAS
VACATIONER

HR HOLIDAY RAMBLER
holidayrambler.com

33C | 35GL | 35K | 36F

ALOE



SOFA



LIVING ACCENT



BEDDING



VALANCE



BACKSPLASH



COUNTERTOP



FLOORING

EQUINOX



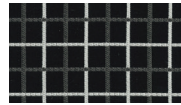
SOFA



LIVING ACCENT



BEDDING



VALANCE



BACKSPLASH



COUNTERTOP



FLOORING

SALUTE



SOFA



LIVING ACCENT



BEDDING



VALANCE



BACKSPLASH



COUNTERTOP



FLOORING

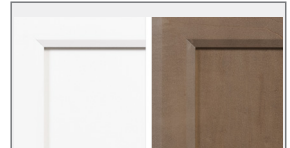


FOSSIL

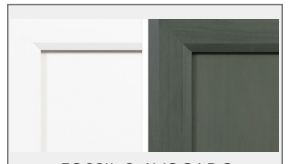
TOFFEE



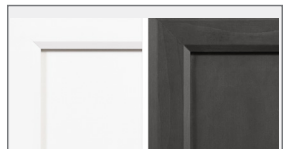
GUINNESS



FOSSIL & TOFFEE
(Accent Wood)



FOSSIL & AVOCADO
(Accent Wood)



FOSSIL & GUINNESS
(Accent Wood)

CHASSIS

MODEL	33C	35GL	35K	36F
Wheelbase	208"	242"	228"	242"
Front GAWR (lbs)	8,000	9,000	8,000	9,000
Rear GAWR (lbs)	15,000	17,500	15,000	17,500
GCWR (lbs)	26,000	30,000	26,000	30,000
Hitch Rating Weight (lbs)	8,000	8,000	8,000	8,000
Tongue Weight (lbs)	800	800	800	800
Fuel Capacity (gal)	80	80	80	80

FORD® CHASSIS

Model: Ford®
Engine: 7.3L Triton V8
Transmission: Ford® 6-Speed, Automatic w/Overdrive
Alternator: 210 Amp
Torque: 468 lb.-ft. @ 3,750 RPM
Horsepower: 335HP @ 3,750 RPM



DIMENSIONS AND CAPACITIES

MODEL	33C	35GL	35K	36F
Overall Length	34' 3"	36' 3"	36' 3"	38' 9"
Overall Height	12' 10"	12' 10"	12' 10"	12' 10"
Overall Width*	102"	102"	102"	102"
Interior Height*	84"	84"	84"	84"
Interior Width*	96"	96"	96"	96"
Patio Awning Width	16'	16'	16'	16'
Interior Storage (cu. ft.)	123	155	126	171
Exterior Storage (cu. ft.)	160	180	180	170
Fresh Water Capacity (gal)	100	100	100	100
Grey Water Capacity (gal)	58	58	58	90
Black Water Capacity (gal)	42	42	42	50

*Overall Width, Interior Height and Interior Width measured with slide-box in.

EXTERIORS

