

2007 ENDEAVOR®



HOLIDAY RAMBLER®

*This is Living*





*This is Living®*







40PDQ | AUTUMN SCROLL | NEWPORT CHERRY

You're ready. Ready for adventure. Ready to get moving. And, ready to discover what's out there. All of this means you're ready for the 2007 Endeavor from Holiday Rambler. There's a reason — actually many reasons — why the Endeavor is one of the most popular coaches on the road. And when you take a closer look you'll discover them one by one — starting with an exterior that really stands out thanks to deluxe full-body paint with new graphics. We also added a new rear cap that distinguishes this as a Holiday Rambler. A name that not only gets you noticed, but comes with built-in fun and adventure with some of

## FUEL FOR YOUR ADVENTUROUS SPIRIT.

the largest and most active owners' clubs on the road. You'll soon discover that with an Endeavor, fun, friends and adventure are always around the next corner.

NOW THIS IS BIG.  
New for 2007 is a really big idea from Holiday Rambler, the PanaSuite™ full-wall slide. It makes a world of difference, creating a roomy, uninterrupted space. And, it's available now on select Endeavor floorplans.











40PDQ | AUTUMN SCROLL | NEWPORT CHERRY

## EXPLORE THE FINER POINTS OF LIFE ON THE ROAD.

Step inside the 2007 Endeavor and you'll discover what life on the road should be like. Plush furnishings, designer carpeting and ceramic tile — it's all here. New for 2007 is an optional tile runner that runs from the cockpit to the newly redesigned kitchen — where you'll find sleek black or stainless steel appliances, including a handy microwave/convection oven and a sealed burner cooktop. Choose the standard four-door refrigerator or opt for a two-way model with an ice dispenser. We also added cathedral cabinet doors on all upper cabinets and a stylish polished radius countertop

with a pullout extension complete with drawers on most models. But those aren't all the changes — we moved the entire kitchen to the front of the RV on the 40SKQ floorplan and put the refrigerator in the slide-out when possible for a more open feel.

After cooking in the new kitchen, enjoy your culinary creations at Endeavor's legless dinette table with two dinette chairs and two coordinating folding chairs for extra guests.









40PDQ | AUTUMN SCROLL | NEWPORT CHERRY

## REST WELL FOR THE JOURNEY AHEAD.

Any adventure requires time out for rest and relaxation. For afternoon cat naps, close the blackout day/night pleated shades and stretch out on the optional leather magic bed sofa or hide-a-bed with air mattress. When it's time to catch some serious Zs, climb in the comfy queen bed, or if you prefer, the optional king. Both sizes are available with a Select Comfort air mattress for a truly restful night's sleep.

There's plenty of storage throughout the Endeavor, including several overhead storage compartments with self-supporting top-hinged doors. You'll find even more storage in the bedroom with one or two nightstands, a dresser and an oversized rear closet wardrobe on most floorplans. The bathroom offers a vanity with under-sink storage and drawers. So when it comes time to pack, just go ahead and bring it all — except for the vacuum. Just add the optional central vacuum system that stores in its own compartment for easy accessibility.









40PDQ | AUTUMN SCROLL | NEWPORT CHERRY

## YOU'RE IN FOR THE RIDE OF YOUR LIFE.

As you climb into the cockpit, take a look around. The dash now has a dazzling Oxford burl wood instrumentation panel. You'll find everything right where you need it, including a new co-pilot side console. And while Endeavor is equipped with a powerful Cummins® 400 HP engine, its cushion air glide suspension makes you feel like you're riding on air. It's also easy to drive with plenty of safety features, including the six-way power seats and adjustable brake and accelerator pedals for ideal positioning. Controls are integrated into the lighted VIP Smartwheel®. And, the Panaview™ 1-piece

windshield provides an unobstructed view of what's ahead, while the color rear vision system with audio and adjustable camera lets you see what's behind.

The CD player/radio now includes a DVD player hooked up to the stunning new 24" or optional 32" flatscreen LCD TV.

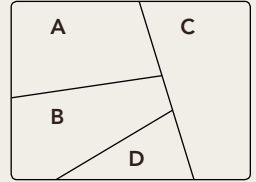
Endeavor's large pass-through storage area not only makes packing easier but also makes it a snap to find and retrieve those things you packed.



A BEAUTIFUL REFLECTION OF YOU.

Holiday Rambler makes it easy to take your style on the road. We offer a variety of decors — each as lovely as the next with rich fabrics, lustrous woods, eye-catching accents and stunning exterior graphics. So the problem isn't finding a look you like, it's narrowing it down to just one.

- A. BEDSPREAD
- B. SOFA
- C. ACCENT
- D. CARPET



AUTUMN SCROLL



WOODLAND TAUPE





## ENDEAVOR HARDWARE

Our elegant cabinet hardware design features a satin nickel finish.



BETTER  
STAIN  
PROTECTION

Manufactured in, not added on. For added protection against stains, soil repellent is applied to virtually all upholstery fabric during the finishing process for superior coverage.\*

\*Brand and application of upholstery fabric protection may vary depending on date recreational vehicle was manufactured.



NEW VINTAGE OAK



NEWPORT CHERRY



CHAMPAGNE SELECT



SUTTON PLACE

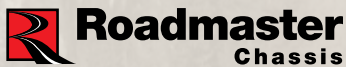


BLACK TIE



## ROADMASTER R-SERIES CHASSIS

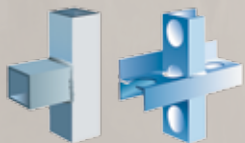
At the heart of the 2007 Endeavor is the Roadmaster Raised Rail RR8R-Series chassis. Designed for the high performance standards of a luxury motorcoach, the chassis is custom-built to the exact specifications of each floorplan — giving you an unbeatable ride and superior handling along with many innovative features. We invite you to take a few minutes and discover all the ways Roadmaster offers you the very best in safety, reliability, comfort and convenience.



ALUMAFRAME®  
CONSTRUCTION  
SINCE 1966:



The Endeavor features Holiday Rambler's exclusive Alumaframe® Superstructure. Our revolutionary system of aluminum C-Channel crossmembers runs the entire length of the unit, with double-welded intersections for added strength. This rigid design is both lighter and sturdier than tubular aluminum frames — and much more reliable than butt-welded or screwed joint designs. From dirt roads to potholes, you can count on Alumaframe® to handle the relentless stresses of the road and provide superior structural integrity for many years to come.



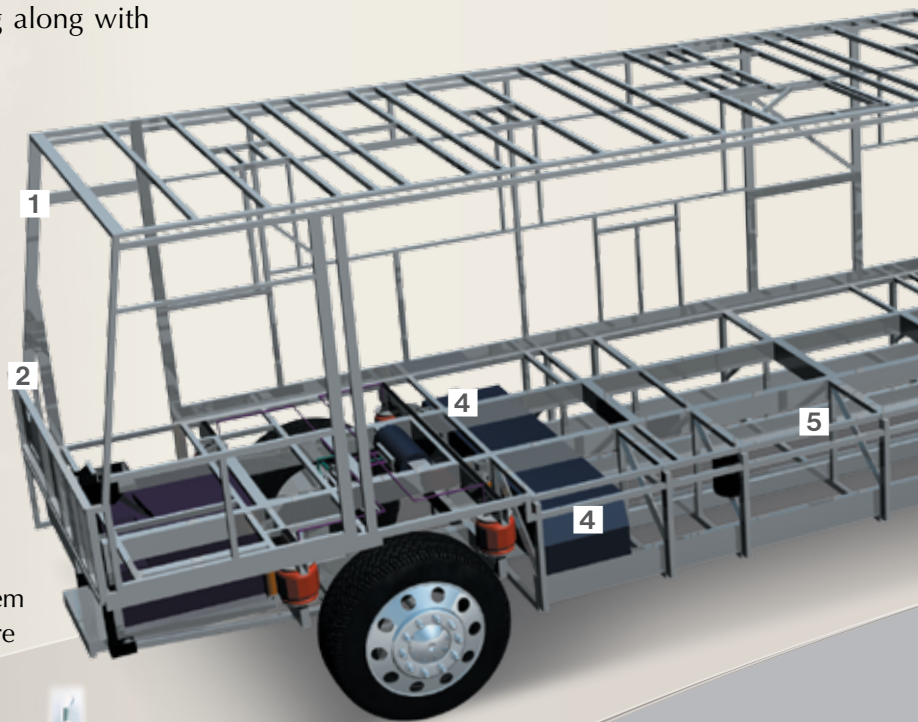
Aluminum (Butt-Welded)      Alumaframe® (C-Channel)



### 9-LAYER ROOF CONSTRUCTION (top to bottom)

- One-piece peaked fiberglass roof
- Luau backing
- Thick, tapered bead foam insulation
- Aluminum double I-beam superstructure filled with fiberglass insulation
- Vapor barrier
- Structure foam: thermal insulative barrier
- 1/2" bead foam insulation
- Foam padding for extra insulation
- Padded vinyl ceiling

- 1 A steel cage cockpit gives the Roadmaster chassis incomparable strength and safety in the front of the coach.
- 2 Every Roadmaster chassis features a steel firewall for added protection in the cockpit.
- 3 The main rails feature an exclusive raised rail design which provides for larger full pass-through storage bays with flush floors. Other highlights include a 3/8" thick frame rail — compared to the 1/4" of other manufacturers — and a stacked aluminum intercooler and radiator for optimum heat transfer and cooling.





**4** Dual fuel fill allows you to fill the tank from either side of the coach, for greater convenience and flexibility at the pump.

**5** Truss System with Rust Inhibitor: This steel truss system is engineered as part of the chassis and provides outstanding strength and rigidity plus pass-through storage. In addition, the structure is pre-primed and coated with a rust-inhibiting paint.

**6** Eight outboard-mounted air bags work in conjunction with eight gas-powered shock absorbers to prevent road trauma from ever reaching the coach.

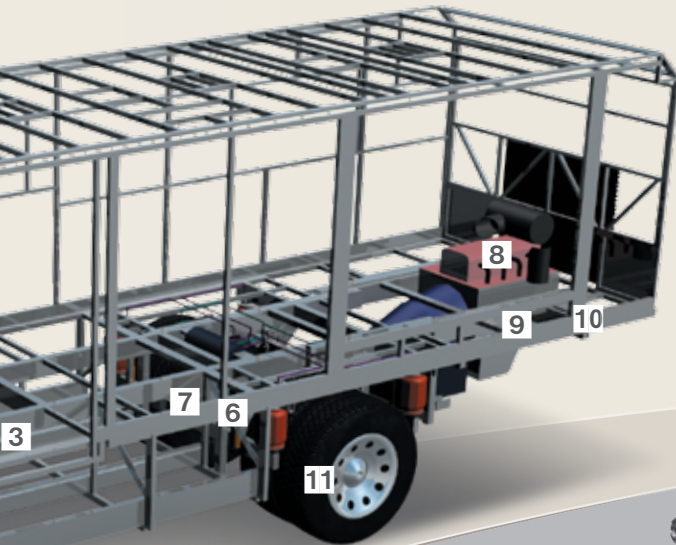
**7** Monitored leveling sensors continually adjust the air pressure at each axle to maintain a level ride and eliminate nosediving, weight transfer, and floating on curved roads. This system also stabilizes the coach on uneven surfaces.

**8** Cummins® ISL 400 Diesel Engine: The Endeavor features a gutsy standard Cummins® ISL 400 diesel engine with Allison® 3000 MH 6-speed World Transmission and electronic shifter.

**9** Engine Mounting: The three-point engine mounting system lowers the coach's center of gravity and reduces the amount of vibration that reaches the coach. The mounting also makes the engine easier to service.

**10** A 10,000 lb. tow hitch rating is the highest in its class.

**11** Automatic Traction Control (ATC) eliminates wheel slippage in slick conditions and heightens control. The Anti-Lock Braking system (ABS) gives you superior stopping power, especially on steep grades. Together, these sophisticated systems offer the very best safety on the road.



### SLIDE-OUT CONSTRUCTION:

When you purchase a Holiday Rambler, you can be sure the slide-out boxes are some of the strongest and most reliable you'll find anywhere. They feature our exclusive multi-layer construction to give you maximum insulation and to reduce the chance of warping, twisting or shifting.



The optional Aladdin™ Junior makes it easy to keep track of many important functions, including engine/transmission temperatures, mileage and much more.

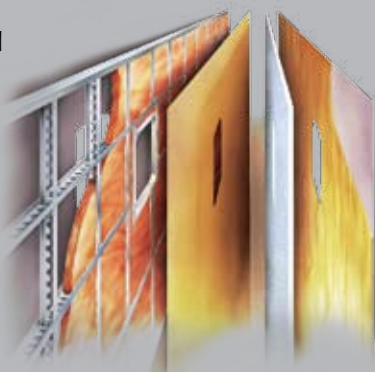


With the GPS option, you're free to explore the middle of nowhere and always know exactly where you are.

### 5-LAYER SIDEWALL CONSTRUCTION

(left to right)

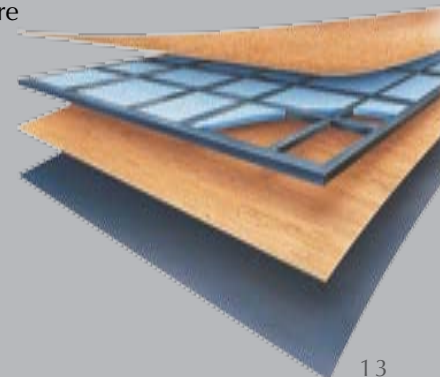
- Gel coat fiberglass
- Interlocking C-Channel filled with 1-1/2" fiberglass insulation glued in place so it doesn't sag or leave spaces uninsulated
- Vapor barrier
- Bead foam saves energy and provides a thermal insulative barrier
- Interior paneling



### 5-LAYER FLOOR CONSTRUCTION

(top to bottom)

- Structurwood™
- 1-1/2" x 1-1/2" square tubular frame
- Blue foam
- Luaun
- Darco





### BODY CONSTRUCTION: FEATURES

- Alumaframe® Superstructure
- Steel Cage Cockpit Construction
- Peaked One-Piece Fiberglass Roof with Fiberglass Insulation
- Panaview™ 1-Piece Windshield
- 84" Interior Height
- Smooth Gel Coat Fiberglass Exterior Walls
- Front Molded Fiberglass Cap
- Rear Molded Fiberglass Cap with Integrated Air Intake
- Pullout Generator Tray with One-Piece Door
- Rear Engine Door Struts
- Steel Framed Floor on Steel Trusses
- Laminated Structurwood™ Flooring
- Electric Flush-Floor Stepwell Cover
- Interior Paneling with 3/4" Insulation
- Foam Insulated Floor Framing with Luaun Backer
- 17.5" Chrome Power Heated Mirror with Turn Signal
- Side-Hinged Baggage Doors; All Door Locations with Redesigned Extrusion and Latch Locations
- Flush-Mount Metal Fuel Doors
- One-Piece Polyethylene Pass-Through Storage Compartment
- Slide-Out Battery Tray
- Full-Length Mud Flap
- 3M Film Front Mask
- Deluxe Full-Body Paint
- Interior Entry Step Storage
- Roof Ladder
- Undercoating

### OPTIONS

- Storage Bay Slide-Out Tray (Complete Pass-Through)
- Standard Run Savings Package: 3-Camera Rear Vision System, Solid Surface Kitchen Sink, RV Sani-Con System, Exterior Tank Monitor Gauges, Power Cord Reel, Auto Gen Start

### CHASSIS/ENGINE/SUSPENSION: FEATURES

- Roadmaster Raised Rail RR8R-Series Chassis
- Cummins® 400 HP ISL Engine with Allison® 3,000 MH 6-Speed World Transmission and Electronic Shifter
- Torque: 1,200 lbs./ft. Max (@ 1,300 RPM)
- Engine Displacement: 540"8.8L
- Aluminum Rear-Mount Radiator with CAC Cooler
- Dual Fuel Fill
- 160 Amp Alternator
- Rear Axle Ratio: 4.30:1
- Radial Tires: 275/80R/22.5
- Pre-Wire for Supplemental Braking System
- Polished Aluminum Wheels
- Cushion Air Glide Suspension with Eight Outboard-Mounted Air Bags and Eight Shock Absorbers
- Anti-Lock Braking System with Full Air Brakes
- Automatic Traction Control
- Exhaust Brake
- Auto Slack Adjusters on Brakes
- Engine Block Heater
- Rock Shield to Radiator
- 10,000 Lb. Hitch Receiver with Seven-Point Connector
- Automatic Hydraulic Leveling Jacks

### COCKPIT: FEATURES

- Automotive Dash with Oxford Burl Wood Instrumentation Panel
- CD Player/Radio with DVD Player, Sirius-Ready Compatibility, Weather Band, IR Repeater Remote
- Power Sunvisors
- Pilot and Co-Pilot Pull-Down Sunshades
- Wood Framed Cabinet Doors with Smoked Glass over Front Entertainment Center System (N/A: 40SKQ)
- Cockpit Front and Side Overhead Cabinet Doors Top-Hinged with Self-Supporting Hinges
- Adjustable Brake and Accelerator Pedals
- 110V, 12V and Phone Outlet
- Color Rear Vision System with Audio and Adjustable Camera
- Lighted VIP Smartwheel® Multiplexed Steering Wheel with Controls for Windshield Wipers, ICC and Cruise Control
- Intermittent Windshield Wipers
- 10-Quart Tank for Windshield Fluid with Fluid Sensor to Tank and Low Wash Indicator on Dash
- Audible Turn Signals
- Roof-Mounted Air Horn
- CB Prep
- Ultraleather™ Six-Way Power Pilot and Co-Pilot Seat with Power Footrest
- Power Steering
- Color-Coordinated Carpeted Floor Mats

### OPTIONS

- 3-Camera Rear Vision System with Audio and Adjustable Center Camera
- GPS Navigation System
- Sirius Satellite Radio System with 6 Months Pre-Paid Activation
- Interior Solar Privacy Sunscreens
- Aladdin™ Junior System
- 10 Disc CD Changer
- Auxiliary Defroster



**APPLIANCES AND ACCESSORIES: FEATURES**

- Large Four-Door Refrigerator with Ice Maker
- High-Output 3-Sealed-Burner Cooktop without Oven
- Removable Solid Surface Range Covers
- Microwave/Convection Oven
- 24" Flatscreen Stereo Color TV with Remote Control in Cockpit Overhead (N/A: 40SKQ)
- 32" Flatscreen LCD TV in Living Area Hutch (Replaces Front Cockpit TV) (40SKQ)
- 20" Color TV with Remote Control in Bedroom (N/A: 40SFT, 40SKQ, 40PRQ)
- 20" LCD Color TV with Remote Control in Bedroom (40SFT, 40SKQ, 40PRQ)
- TV Antenna
- Home Theater Surround Sound System Added to In-Dash Stereo with DVD Player
- Exterior Hook-Ups for DSS Dish and Cable
- Digital Satellite System Prep
- Interior Cable TV Hook-Up and Telephone Jacks
- Exterior Gas Line Hook-Up Prep for LP Accessories
- Washer/Dryer Prep

**OPTIONS**

- High-Output 3-Sealed-Burner Cooktop with Oven
- Dometic Sidewise 14 Cu. Ft. 2-Way Refrigerator with Ice Dispenser in the Door (N/A: 38PDQ, 40SFT, 40PAQ)

- Stainless Steel Package: Includes Stainless Steel Refrigerator, Microwave
- Central Vacuum System
- Combination Washer/Dryer
- Bedroom Clock Radio AM/FM/CD/DVD Player
- 32" Flatscreen LCD TV in Front Cockpit Overhead (N/A: 40SKQ)
- Semi-Automatic Digital Satellite Dish
- In-Motion Digital Satellite Dish (Does Not Include Receiver)
- Exterior Entertainment Center (26" LCD TV, AM/FM/CD Radio with Two Speakers) (N/A: 40PAQ, 40SKQ)

**INTERIOR: FEATURES**

- New Vintage Oak Cabinetry
- Cathedral Cabinet Doors on All Upper Cabinets
- Hardwood Cabinet End Panels
- Wainscoting and Chair Rail (40SFT)
- Refrigerator Raised Panel Hardwood Inserts
- Self-Supporting Top-Hinged Overhead Storage Doors and Positive Catches on All Other Doors
- Heavy-Duty Ball Bearing Drawer Guides
- Crown Molding in Bedroom and Living Area
- Metal Interior Grab Handle on Dash at Entry Door
- Satin Nickel Cabinetry Hardware and Bath Accessories
- Polished Radius Corian® Solid Surface Kitchen Countertop with Stainless Steel Sink with Two Sink Covers (Radius Countertops N/A on 40PET)
- Polished Corian® Solid Surface Kitchen Countertop Extension (40PET)
- Pullout Countertop Extension with Drawers and Corian® Top (N/A: 36PDQ, 38PDQ, 40SKQ)
- Galley Range Backsplash behind Cooktop, Prefabricated Ceramic Tile with Corian® Molding
- Sink and Stovetop Cover Storage Area inside Kitchen Base Cabinet
- Solid Surface Bathroom Countertop with Integrated Sink
- Lavatory Backsplash, Corian® with Decorative Mirror (N/A: 40SKQ)
- Solid Surface Dinette Tabletop (N/A: 40PAQ)
- Dinette Table with Hardwood Top (40PAQ)
- Solid Surface Nightstand Tops
- Kitchen Overhead Cabinets with Adjustable Shelf
- Spice Cabinet over Microwave
- Ceramic Tile in Kitchen and Bath
- Tile Entry Floor
- Designer Carpeting in Living Area and Bedroom
- Soft Touch Padded Vinyl Ceiling
- Hardwood Slide-Out Fascia with Decorative Center Block
- Decorative Hardwood/Fabric Window Boxes Throughout Coach
- Hardwood Framed Headboard with Fabric Inserts
- Oversized Rear Closet Wardrobe with Mirror Doors and Frames in Satin Nickel (N/A: 40PRQ)
- Towel Bar inside Private Bath
- Two Towel Rings in Bathroom
- Bedroom Dresser with Solid Surface Countertop
- Decorative Glass Doors for Living Room Hutch Cabinets (40SKQ)
- Hall Cabinet (40SKQ)
- Decorative Picture in Living Room (40SKQ)
- Decorative Accent Mirror (38PDQ, 40PET, 40PAQ)
- Bathroom Lavatory Mirror
- Blackout Day/Night Pleated Shades in Living Area and Bedroom, Mini Blinds in Private Bath and Kitchen
- Soil Repellant Protection on Fabric

**OPTIONS**

- Decors: Autumn Scroll, Woodland Taupe, Sutton Place, Black Tie
- Wood Choice: Newport Cherry and Champagne Select
- Tile Runner from Cockpit to Kitchen (N/A: 40SKQ)
- Solid Surface Kitchen Sink

**HOLIDAYRAMBLER.COM**

Log on to our website anytime, night or day. It's your link to everything Holiday Rambler, including product news and updates, club events, dealer and service center info and much more. Take it for a test drive today.



### FURNITURE: FEATURES

- Legless Dinette Table with Two Chairs and Two Folding Chairs (N/A: 40PAQ)
- Hardwood Dinette Table with Two Dinette Chairs and Two Folding Chairs (40PAQ)
- Roadside: Fabric Easy Bed Sofa
- Curbside: Fabric Barrel Chair and Table (40PAQ)
- Curbside: Fabric Easy Bed Sofa (N/A: 36PDQ, 40PAQ)
- Curbside: Fabric Love Seat (36PDQ)
- Queen Bed (60" x 80") with Corian® Solid Surface Nightstands

### OPTIONS

- King Bed with One Nightstand (40PET, 40PDQ)
- Queen Select Comfort Air Mattress
- King Select Comfort Air Mattress (40PET, 40PDQ)
- Roadside: Fabric Hide-A-Bed with Air Mattress
- Roadside: Leather Easy Bed Sofa
- Roadside: Leather Hide-A-Bed with Air Mattress
- Roadside: Wraparound Computer Desk with OptimaLeather™ Euro-Recliner with Heat and Massage (38PDQ, 40PRQ, 40PDQ)
- Curbside: Leather Hide-A-Bed with Air Mattress (N/A: 36PDQ, 40PET, 40SKQ, 40PAQ)
- Curbside: Leather Magic Bed Sofa (N/A: 36PDQ, 40PET, 40SKQ, 40PAQ)
- Curbside: Leather Easy Bed Sofa (N/A: 36PDQ, 40PAQ)
- Curbside: Leather Love Seat (36PDQ)
- Curbside: Leather J-Lounge with Drawer (N/A: 36PDQ, 40SKQ, 40PAQ)
- Curbside: Leather Recliner (40PAQ)
- Curbside: OptimaLeather™ Euro-Recliner with Ottoman, Heat and Massage (40PAQ)
- Legless Dream Dinette System with Arched Back Wood Booth Dinette (38PDQ, 40SKQ)

### ELECTRICAL SYSTEMS AND LIGHTS: FEATURES

- 50 Amp 12V Distribution Panel and Power Cord
- Onan® 8.0 kW Quiet Diesel Generator on Manual Slide-Out
- Four 6V Deep Cycle Batteries
- Two 12V Heavy-Duty Chassis Batteries
- Battery Disconnect
- Battery Boost Switch in Cockpit
- 2,000 Watt Inverter
- Recessed Docking Lights
- Porch Light and Exterior Step Light on Same Switch
- Lighted Interior Steps

- Lights in Outside Storage Compartments with Switch on Passenger Console and Utility Bay
- 110V Outlet in Outside Storage Compartment
- Underhood Utility Light
- Convenience Center in Hallway
- Fluorescent Light(s) under Kitchen Overhead
- Fluorescent Ceiling Lights Throughout
- Decorative Satin Nickel Lighting Package
- Fluorescent Ceiling Lights inside Living Area Slide-Out House
- Energy Management System

- Directional Map Lights on Bottom of Front TV Cabinet
- Halogen Light on Driver and Passenger Overhead
- Pre-Wire for Solar Panel
- Halogen Lights under Living Room, Dining Room, Bed Overhead Cabinets

### OPTIONS

- Auto Generator Start
- Solar Panel
- Power Cord Reel

### PLUMBING AND LP SYSTEMS: FEATURES

- Demand Water System and Water Pump
- 10 Gallon LP Gas/Electric Water Heater with Electronic Ignition DSI
- Single-Lever Kitchen Faucet with Pullout Sprayer
- Separate Satin Nickel Faucet for Filtered Water
- Satin Nickel Bathroom Faucet
- Water Heater Bypass Valve
- Water Pump Switch in Convenience Center, Kitchen Galley and Service Bay Area
- China Toilet (N/A: 40SFT, 40SKQ)

- China Toilet Electronic Thetford Silent Plus (40SFT, 40SKQ)
- Shower inside Wet Bay with Hot/Cold Water
- No-Fuss Flush Holding Tank Rinsing System
- Gravity and Pressurized Water Fill
- One-Piece Round Shower with Reeded Glass Door (40SFT, 40PDQ, 40PRQ)
- One-Piece Neo-Angled Shower with Obscured Glass Door (N/A: 36PDQ, 40SFT, 40PDQ, 40PRQ)
- One-Piece Rectangle Shower Door with Obscured Glass (36PDQ)

- Satin Nickel Shower Door Frame with Decorative Glass
- Satin Nickel Shower Faucet with Slide Bar and Shut-Off Valve at Shower Head

### OPTIONS

- RV Sani-Con Tank Drainage System (Eliminates Sewer Storage)
- Water Hose Reel (N/A: 40PRQ)
- Exterior Tank Monitor Gauge in Wet Bay
- Neo-Angled Bathtub



**HEATING, VENTS AND AIR CONDITIONING: FEATURES**

- Dual 13.5M BTU Roof Air Conditioner with Ducted Air, Heat Pumps and Digital Thermostat Control
- Dual Zone Electronic Ignition Furnaces – 51M BTU (One 31M BTU and One 20M BTU)
- Electronic Dash AC/Heat Climate Control System
- Fantastic 12V Attic Fan with Rain Sensor with Electronic Wall Thermostat in Kitchen
- 12V Attic Fan in Private Bath with Wall Control of Automatic Dome and Fan Power
- 12V Heater in Wet Bay
- Metal Floor Registers Satin Nickel

**OPTIONS**

- Fantastic 12V Attic Fan with Rain Sensor with Electronic Wall Thermostat in Bath
- Ceiling Fan in Bedroom (N/A: 36PDQ, 38PDQ)

**WINDOWS, DOORS AND AWNINGS: FEATURES**

- Radius Flush-Mount Dual Pane Safety Glass Dark Tinted Windows
- Front Entry Door with Removable Screen and Anti-Skid Steps
- Exterior Entry Door Grab Handle
- Metal Interior Grab Handle on Dash at Entry Door
- Keyless Entry
- Automatic Front Door Awning
- Topper Slide-Out Awnings Living Area and Bedroom
- Eclipse Automatic Patio Awning
- Tinted Skylight in Bathroom with Protecta Glaze
- Window Awnings on All Slide-Out House Windows except Slide-Out Windows under Patio Awning

**OPTIONS**

- Bedroom Window Awning on Sidewall (40PET)

**SAFETY: FEATURES**

- Fire Extinguisher
- Deadbolt Lock on Entrance Door
- 120V GFI Protected Circuit (Kitchen, Bath, Exterior)
- LP Gas Detector
- Smoke Detector
- Carbon Monoxide Detector
- Driver and Passenger Three-Point Seatbelts
- Third Brake Safety Light
- Egress Window(s)

Weights*	36PDQ	38PDQ	40SFT	40PET	40SKQ	40PRQ	40PAQ	40PDQ
Gross Vehicle Weight Rating	33,000	33,000	33,000	33,000	33,000	33,000	33,000	33,000
Gross Combined Weight Rating*	43,000	43,000	43,000	43,000	43,000	43,000	43,000	43,000
Front Gross Axle Weight Rating	13,000	13,000	13,000	13,000	13,000	13,000	13,000	13,000
Rear Gross Axle Weight Rating	20,000	20,000	20,000	20,000	20,000	20,000	20,000	20,000
<b>Measurements</b>								
Wheelbase	213"	237"	261"	261"	261"	261"	261"	261"
Overall Length	36' 10"	38' 10"	40' 10"	40' 10"	40' 10"	40' 10"	40' 10"	40' 10"
Overall Height	12' 10"	12' 10"	12' 10"	12' 10"	12' 10"	12' 10"	12' 10"	12' 10"
Interior Height	84"	84"	84"	84"	84"	84"	84"	84"
Interior Width	94.5"	94.5"	94.5"	94.5"	94.5"	94.5"	94.5"	94.5"
Exterior Width	100.5"	100.5"	100.5"	100.5"	100.5"	100.5"	100.5"	100.5"
<b>Tank Capacities**</b>								
Water Heater	10	10	10	10	10	10	10	10
Gray Tank	62	62	62	62	62	62	62	62
Black Tank	40	40	40	40	40	40	40	40
Fresh Tank	100	100	100	100	100	100	100	100
Fuel Tank	100	100	100	100	100	100	100	100
LP Tank***	39	39	39	39	39	39	39	39

\* Towing capacity is limited by GCWR; your vehicle's towing capacity is the difference between the GCWR and the actual vehicle weight, including all water, fuel, passengers and cargo. Your towed vehicle should be equipped with auxiliary brakes if the weight of the towed vehicle exceeds 1,000 lbs. Consult your owner's manual for further towing information.

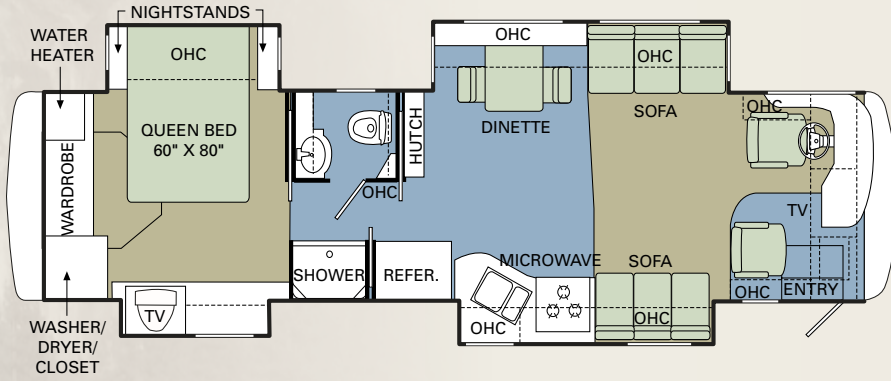
\*\* All tank capacities are estimated based upon calculations provided by the tank manufacturers and represent approximate capacities. The actual "usable capacity" may be greater or less than the estimated capacities based upon fabrication and installation of the tanks.

\*\*\* Actual filled LP capacity is 80% of listing due to safety shut-off required on tank.

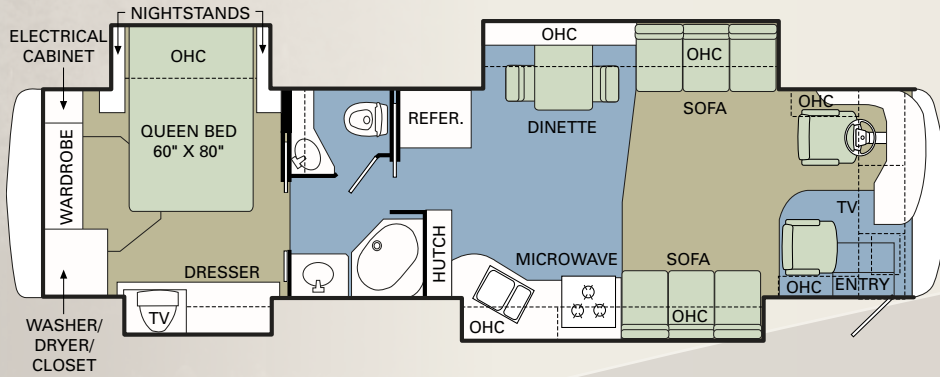
The actual overall length of the recreational vehicle may differ from that indicated in the brochure due to variances in the manufacturing process and/or installed components. The actual length may be greater or less than that indicated. Due to the large variety of options and floorplan arrangements available to our customers, actual weights for each unit can differ significantly. Holiday Rambler provides a weight sticker on each unit we produce which includes that unit's tank capacities and approximate weight. Consult your local Holiday Rambler dealer for unit availability and further information. The information printed in this brochure reflects product design, fabrication, and component parts at the date of printing. The manufacturer reserves the right, at any time, to make changes in product design or material or component specifications as its sole option, without notice. This includes the substitution of components of a different brand or trade name which will result in comparable performance. All information printed in this brochure is subject to change after the date of printing. Some features shown or mentioned in this brochure are optional and may only be available in selected floorplans. Photographs may show props or decorations that are not standard equipment on Holiday Rambler models. Holiday Rambler, the Holiday Rambler logo and its design, are registered trademarks. All other products and company names are trademarks and/or registered trademarks of their respective holders. While the color of the motorhome's exterior and the interior fabrics depicted in this sales brochure are fair and reasonable depictions, the colors depicted may not be an exact match of the actual colors because of the variances in photo-processing and variances caused by inserting the photographs within the sales brochure. Due to product improvements, changes during the model year and/or transcription errors that may occur, information represented within this brochure may not be accurate at the time of your purchase. If certain information is significant to your purchasing decision, please confirm the information with your dealer prior to submitting your order. Component part and appliance manufacturers issue limited warranties covering those portions of the recreational vehicle not covered by the Limited Warranties issued by Monaco Coach Corporation. To learn which specific component parts and appliances are excluded from the Limited Warranties issued by Monaco Coach Corporation, please contact your selling dealership or Monaco Coach Corporation directly, or review the warranty packet inside the recreational vehicle.

2007 FLOORPLANS ■ CARPET | ■ TILE

36PDQ



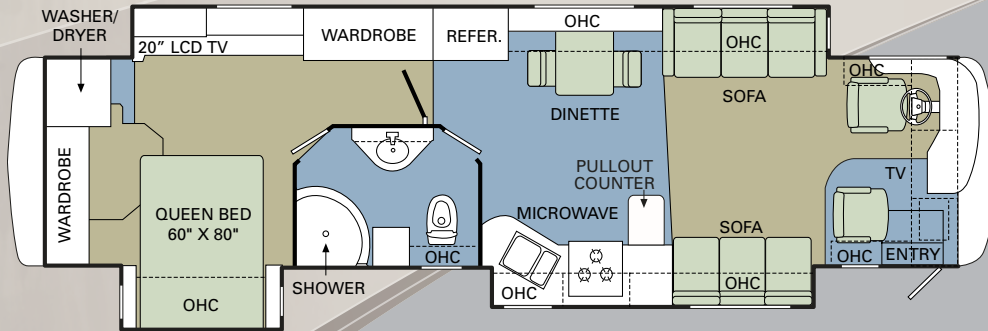
38PDQ



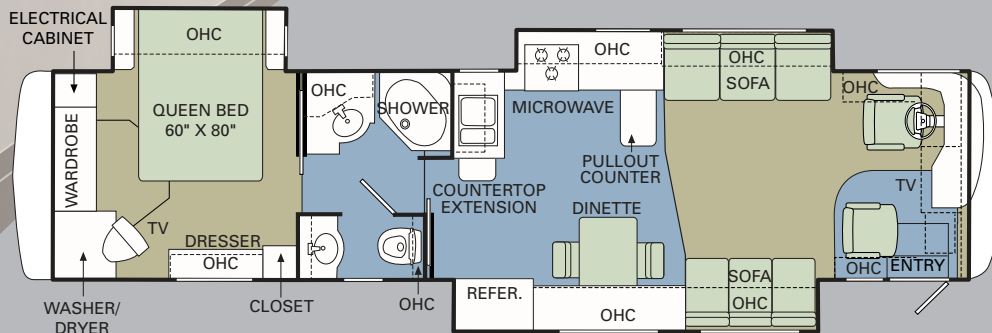
EXCLUSIVE HYDRAULIC

**FULL-WALL SLIDE**  
 ▼ PANASUITE

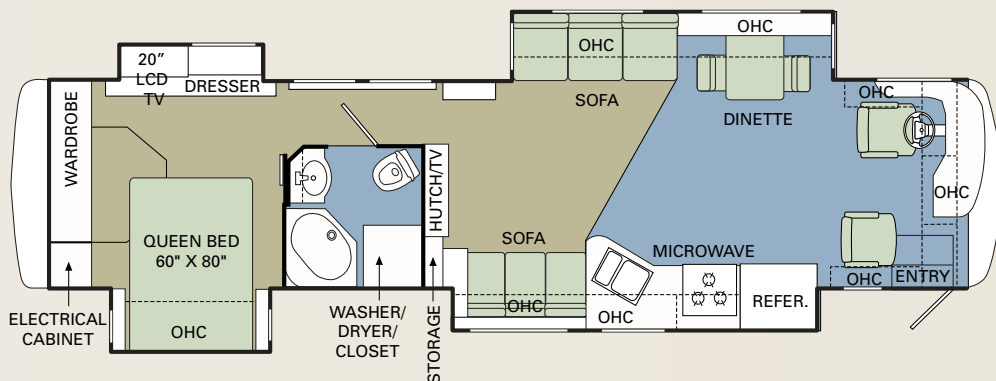
40SFT



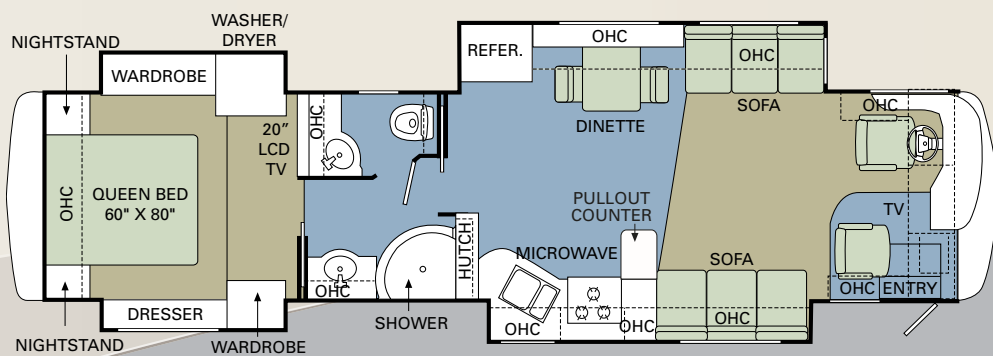
40PET



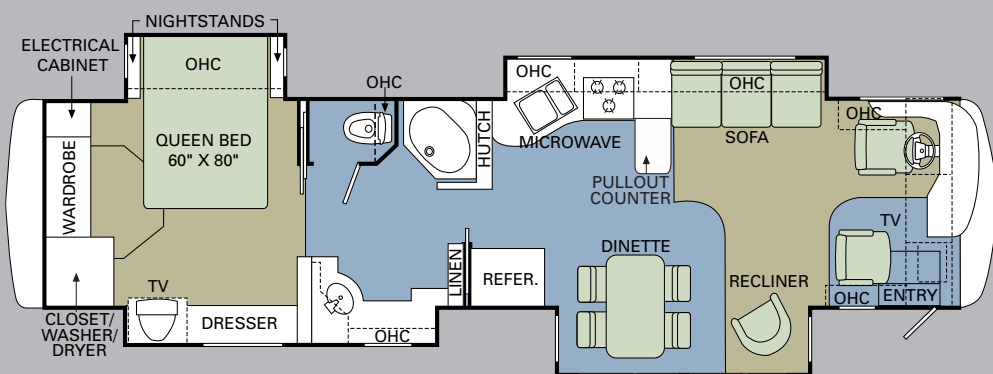




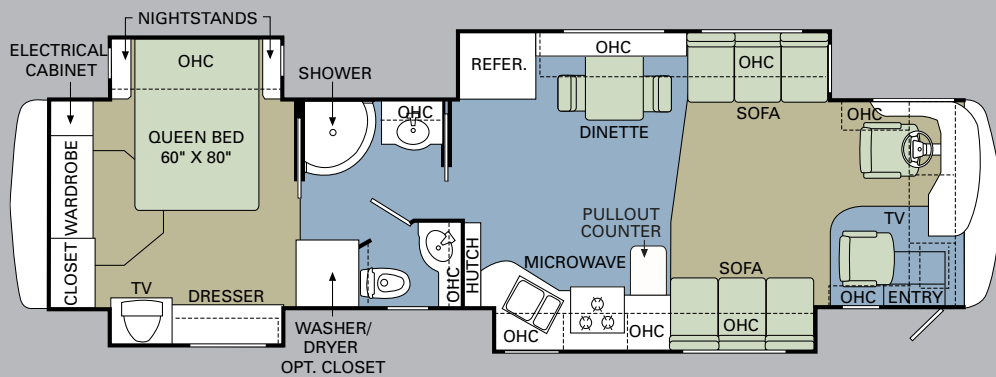
40SKQ



40PRQ



40PAQ



40PDQ



2007 ENDEAVOR®



## THE POWER BEHIND THE NAME.

At Holiday Rambler, every one of our RVs shares something special — something that's hard to describe, but easy to recognize. It's that unique touch that makes Holiday Rambler stand apart. It's our complete dedication to quality at every level — from the designers who create unique looks to the craftsmen who apply the finishing touches. It's our unbeatable service, which gives you 24-hour availability, 365 days a year. It's a commitment to safety and a tradition of innovation. And finally, it's the best people in the business. The Holiday Rambler difference. It's in every RV we make — including yours.



**HOLIDAY RAMBLER®**

*This is Living®*

DEALER:

606 Nelson's Parkway Wakarusa, IN 46573  
www.holidayrambler.com (800) 245-4778



**ASSISTANCE**

SALES • TECH • ROADSIDE



WE'RE HERE.  
ANYTIME, EVERY TIME.

- Reach us anytime — literally — via our live customer support line.
- Drive in to one of our 350 Service Centers.
- Enjoy the first year free when you enroll in our Owner Advantage Roadside Assistance Program.
- See where it all begins with a tour of one of our facilities in Indiana or Oregon. Call 1-800-650-7337 or 1-800-634-0855 to find out more.

## WARRANTIES

12 MONTH/24,000 MILE  
basic limited warranty

5 YEAR/50,000 MILE limited  
warranty on aluminum or steel  
frame structure of sidewall,  
roof, front and rear cap

3 YEAR/36,000 MILE limited  
warranty on Roadmaster chassis

Applies to certain models. See owner's  
manual for complete details.



MONACO COACH CORPORATION

Monaco is traded on the New York Stock Exchange under the listing MNC.  
© 2006, Monaco Coach Corporation 8/06 NPN:BROHEND Litho in USA.

