



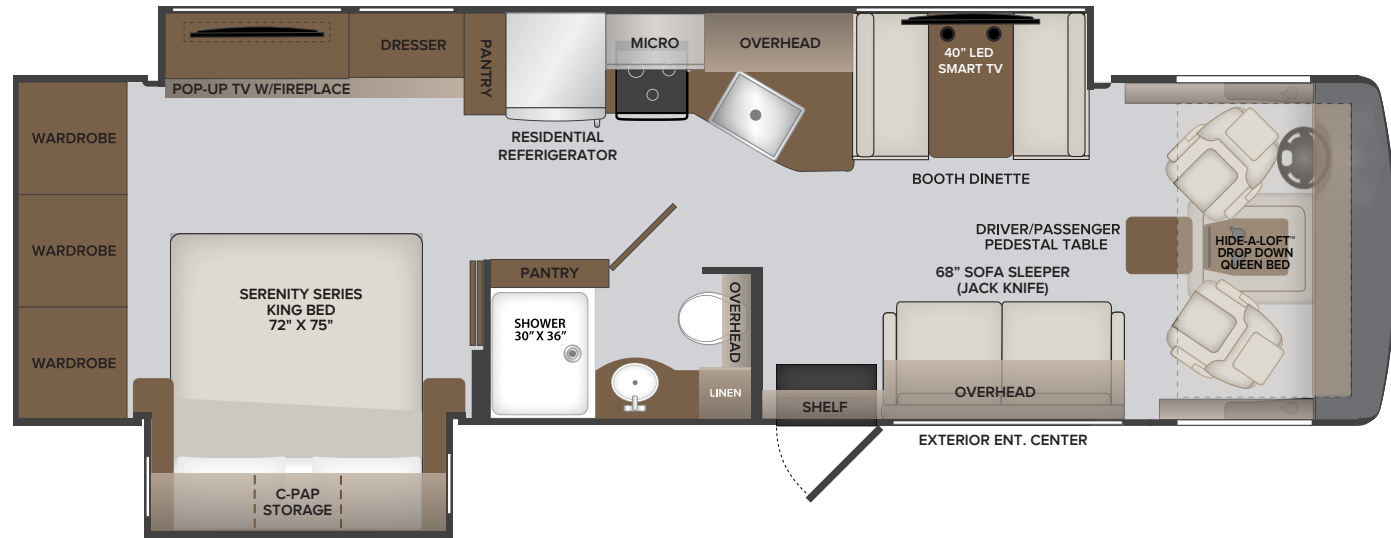
Options: 096 | 105 | 126 | 131 | 194 | 230 | 407 | 471 | 580 | 605 | 953

TOP FLOORPLAN FEATURES

- Sleeps up to 6
- Ducted A/C System
- Stainless Steel Farmhouse Galley Sink
- 3-Burner Gas Range w/ Glass Covers
- Sony® Dash Stereo w/CarPlay

OPT. 126
WASHER & DRYER
COMBO

OPT. 131
WASHER & DRYER
STACKABLE



FORD® CHASSIS



Model: Ford®

Engine: 7.3L Triton V8

Transmission: Ford® 6-Speed, Automatic w/Overdrive

Alternator: 175 Amp

Torque: 468 lb.-ft. @ 3,000 RPM

Horsepower: 350HP @ 3,900 RPM



OPT. 194
78" THEATER SEATING

INVICTA 32RW OPTIONS

096	KING® Universal Satellite System	194	Theater Seating Sofa	580	Collision Mitigation
105	Dometic 8cf Double Door Refrig - LP	230	Roof Vent Covers	605	Dual Glazed Windows
126	Washer/Dryer — All in one combo	470	SumoSprings® - Front/Rear	953	Power Driver Seat
131	Washer/Dryer — Stackable	471	Steering Stabilizer System		

2022

Class A Gas
INVICTA

32RW
FLOORPLAN