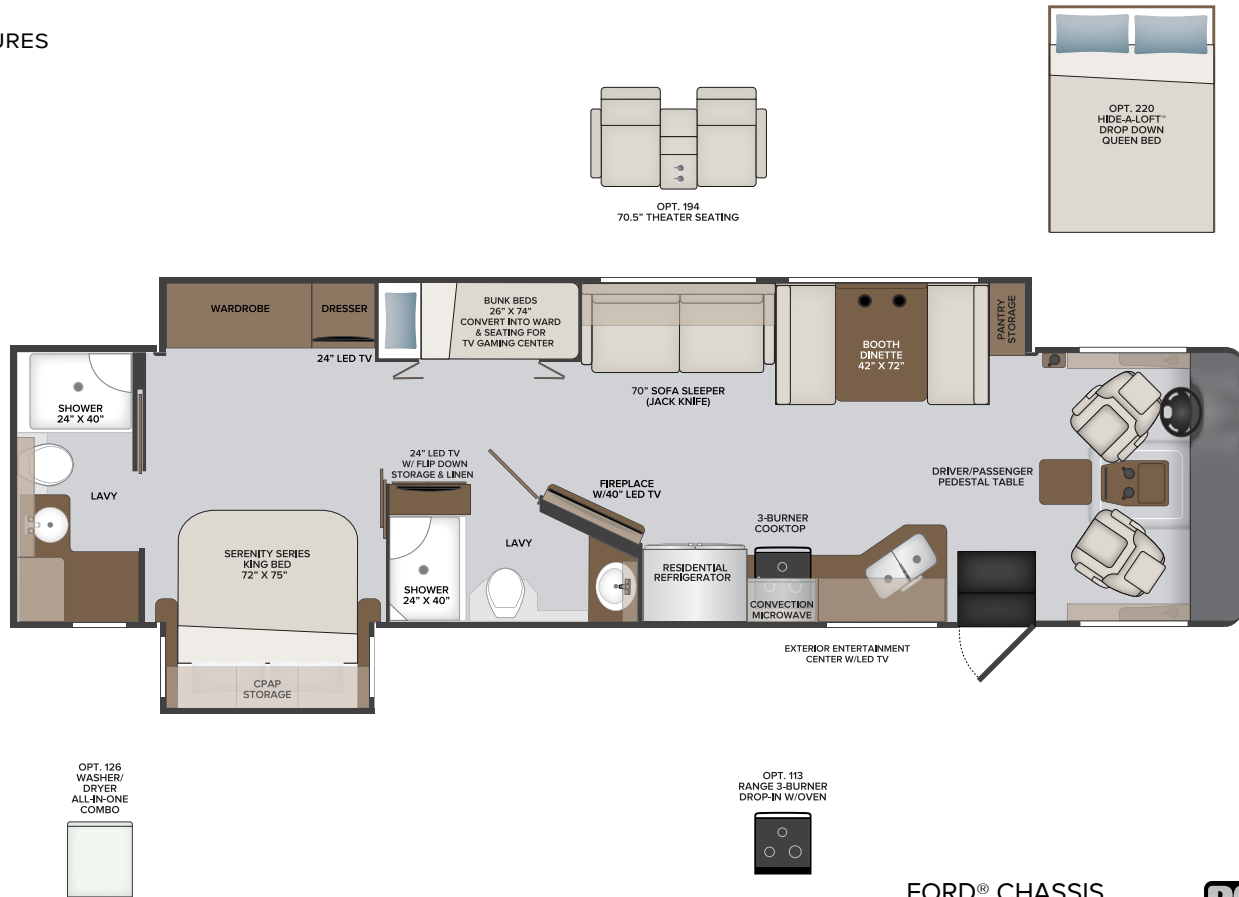


36F Options: 089 | 096 | 109 | 113 | 126 | 194 | 220 | 304 | 470 | 471 | 580 | 671 | 833

TOP FLOORPLAN FEATURES

- Sleeps up to 8
- Two Full Lavys
- Bunk Beds
- Surge Protection
- Tarkett® Flooring
- Electric Fireplace at Feature Wall
- Exterior Entertainment Center
- 26,000# Chassis



VACATIONER 36F OPTIONS

| | | | | | |
|-----|----------------------------------|-----|----------------------------------|-----|------------------------|
| 089 | Upgraded WiFi Package | 194 | Theater Seating Sofa | 580 | Collision Mitigation |
| 096 | KING® Universal Satellite System | 220 | Hide-A-Loft™ Drop Down Queen Bed | 671 | Manual Power Cord Reel |
| 109 | Truma Tankless Water Heater | 304 | Solar Electrical Panel (265w) | 833 | Free Standing Dinette |
| 113 | Range -3 Burner Drop-in w/Oven | 470 | SumoSprings® - Front/Rear | | |
| 126 | Washer/Dryer — All in one combo | 471 | Steering Stabilizer System | | |

FORD® CHASSIS

Model: Ford®

Engine: 7.3L Triton V8

Transmission: Ford® 6-Speed, Automatic w/Overdrive

Alternator: 175 Amp

Torque: 468 lb.-ft. @ 3,000 RPM

Horsepower: 350HP @ 3,900 RPM



2022

Class A Gas
VACATIONER

36F
FLOORPLAN