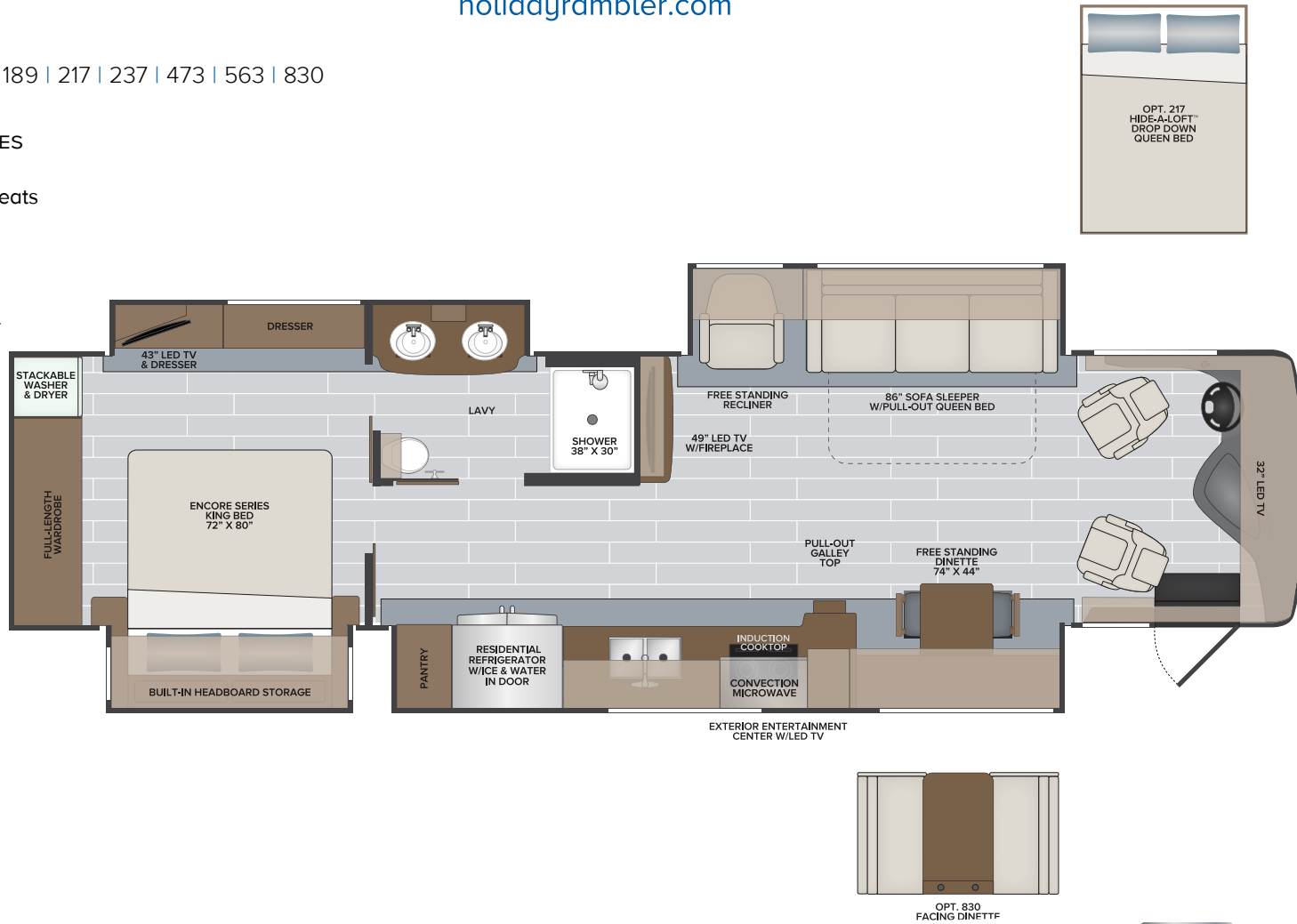


**38F**

Options: 099 | 189 | 217 | 237 | 473 | 563 | 830

**TOP FLOORPLAN FEATURES**

- Sleeps up to 6
- Power Driver/Passenger Seats
- Free Standing Dinette w/Credenza
- Pull-out Galley Top
- Full-length Wardrobe w/stackable washer/dryer
- Full Dresser Cabinet in Bedroom w/43" LED TV
- 86" Sofa w/Queen Size Pull-out Bed
- Large Pantry w/Nine Pull-out Drawers
- Dual Sink in Full Lavy
- Articulating King Bed



**NAVIGATOR 38F OPTIONS**

099	Satellite Delete	473	Brakesync — NEW
189	Power Passenger Seat w/Power Footrest	563	Technology Package
217	Hide-A-Loft™ Drop Down Queen Bed	809	L-Shaped Dinette
237	Third Roof AC	830	Facing Dinette

**TITAN BRIDGE® CHASSIS**  
 Model: Freightliner® XCM Series  
 Engine: Cummins ISB 6.7L  
 Transmission: Allison® 2,500 MH 6-Speed w/Electronic Shifter  
 Alternator: Delcom Remy 160 Amp  
 Torque: 700 lb.-ft. @ 1,600 RPM  
 Horsepower: 340HP



**2022**

Class A Diesel  
**NAVIGATOR**

**38F**  
FLOORPLAN